

Fan Expansion for Patchwork

# PATCHWORK CRAZY QUILT

This challenge is part of Lookout's *News from the Lookout* magazine, issue #19. Simply cut along the dotted line and the sheet will fit in the game box.

## PATCHWORK CRAZY QUILT

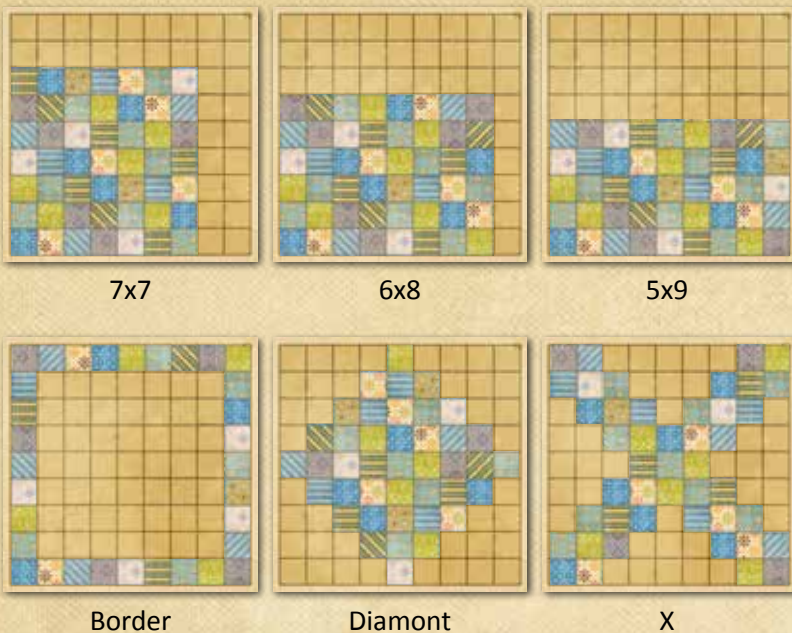
Idea: Eric Fisk

This challenge is designed to add variety in Patchwork, all in these 3 easy steps:



- 1 Start the neutral token clockwise next to the free piece that is shaped like a cross, instead of the smallest piece. *(This is to nerf the power of the free piece, which is overpowered in the early game.)*
- 2 The first player selects a shape from the 6 below, marking it with a button from the general supply. The selected shape replaces the shape shown on the special tile. In other words, the first player to complete the selected shape gets the 7-button special tile.
- 3 The second player selects one of the 6 rule twists, also marking it with a button.

### Player 1 chooses a pattern:



### Player 2 chooses a rule twist:

- You must place one of your first 3 patches on the other player's board.
- When you land on the other player's token, take a button from them *(if they have one)*.
- You start the game with 10 buttons each *(instead of 5)*.
- During scoring, each empty space is worth 3 negative points *(instead of 2)*.
- Invert the shape chosen on the left, filling in spaces outside the pattern for the bonus.
- Instant win: the first player to complete the shape on the left wins!